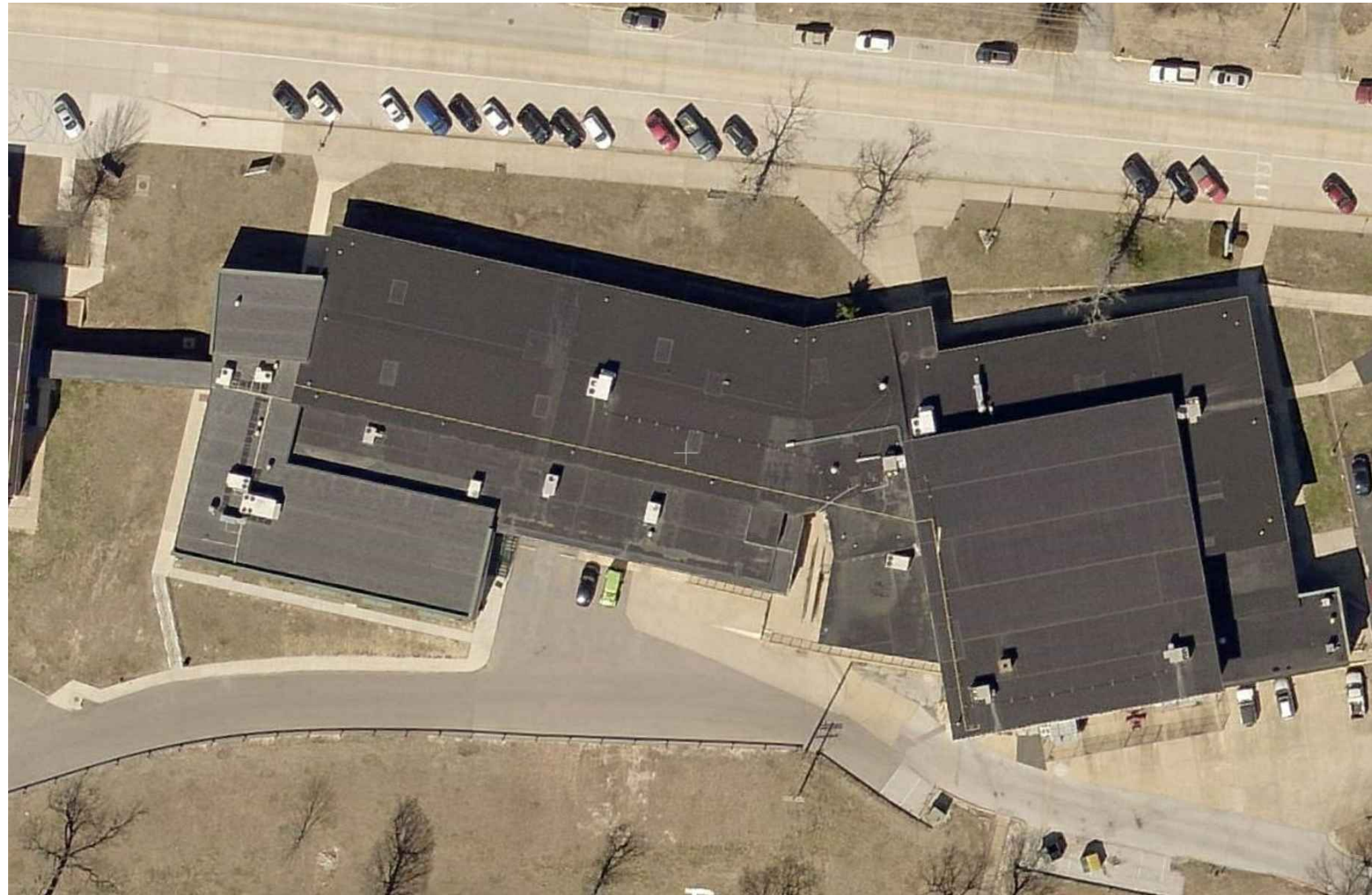
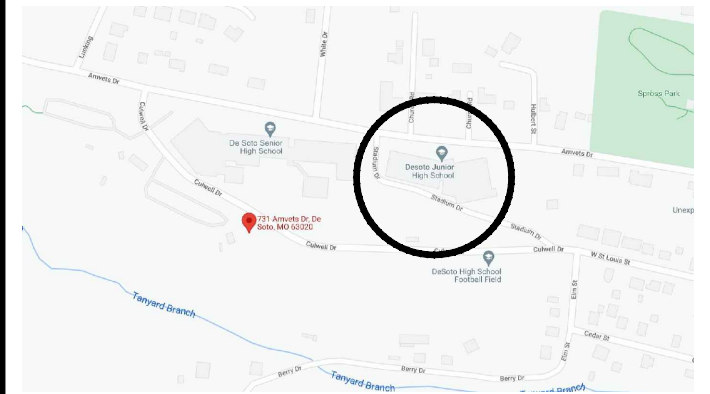


DESOTO JUNIOR HIGH SCHOOL

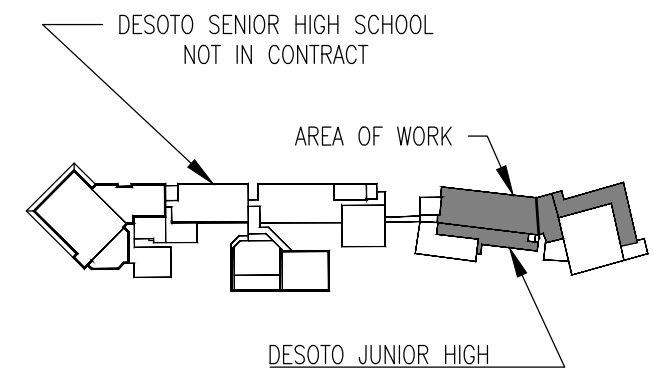
731 AMVETS DRIVE, DE SOTO, MO 63020



LOCATION MAP



KEY PLAN



DRAWING INDEX

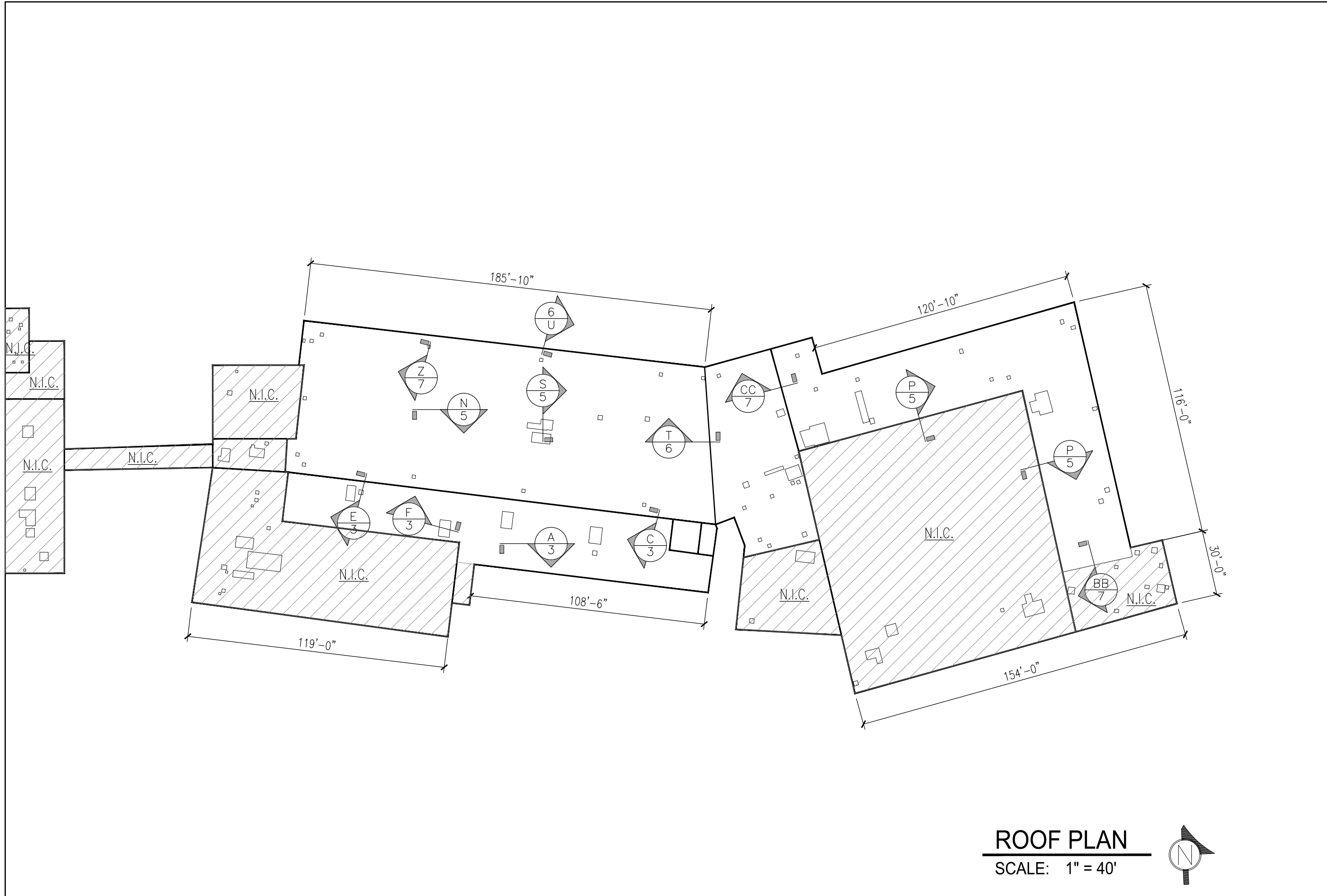
- SHT 1 - COVER SHEET
- SHT 2 - ROOF PLAN
- SHT 3 - DETAILS
- SHT 4 - DETAILS
- SHT 5 - DETAILS
- SHT 6 - DETAILS
- SHT 7 - DETAILS

THE GARLAND COMPANY INC.
 3800 EAST 91st STREET - CLEVELAND, OHIO 44105-2197
 PHONE (800) 327-9356 / FAX (216) 641-0633



DESOTO JUNIOR HIGH SCHOOL
 731 AMVETS DRIVE, DE SOTO, MO 63020
 AGENT: JEREMY CODART
 JOB NUMBER:

REVISION:
 SHEET: 1 OF 7
 DATE: 08-17-22
 ARCHITECT: JEREMY CODART
 CUSTOMER:
 DWG BY: GCK
 CHK BY:

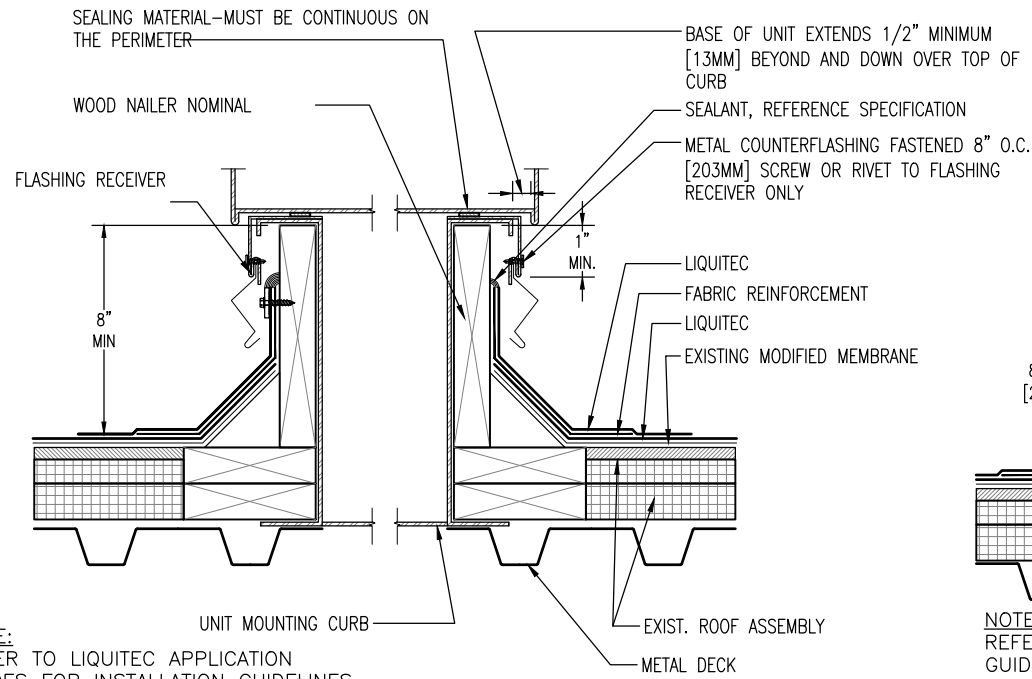


ROOF PLAN

SCALE: 1" = 40'

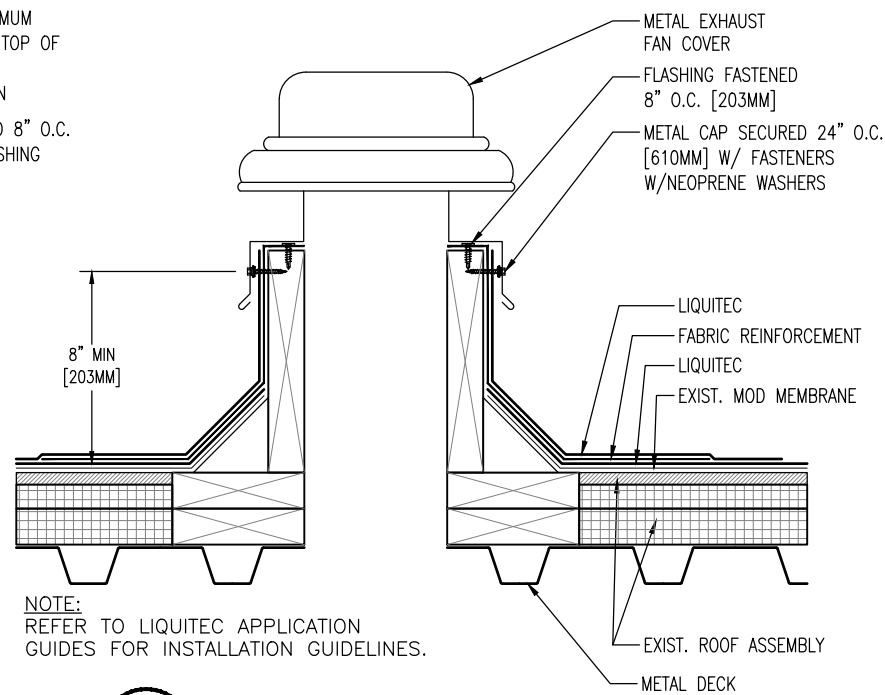


REVISION:				
SHEET:	2	OF	7	
DATE:	08-17-22	ARCHITECT:	JEREMY COZART	DWG BY: GCK
		CUSTOMER:	DESOTO JUNIOR HIGH SCHOOL 731 AMETS DRIVE, DE SOTO, MO 63202	CHK BY:
				JOB NUMBER:
				AGENT: JEREMY COZART
				THE GARLAND COMPANY INC. 3800 EAST 91st STREET - CLEVELAND, OHIO 44105-2197 PHONE (800) 327-9356 / FAX (216) 641-0833
				Since 1895



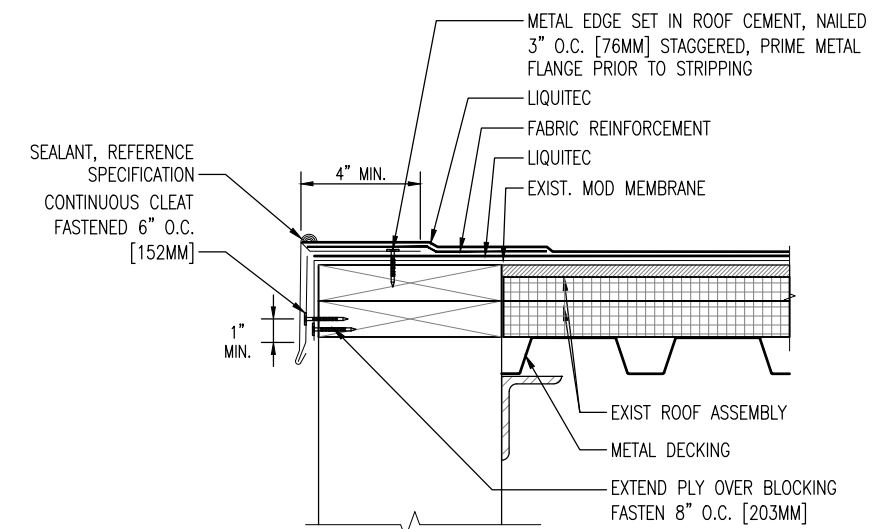
NOTE:
REFER TO LIQUITEC APPLICATION
GUIDES FOR INSTALLATION GUIDELINES.

F
3 **CURB DETAIL / AIR
HANDLING STATION**
SCALE: 1/2" = 1'-0"



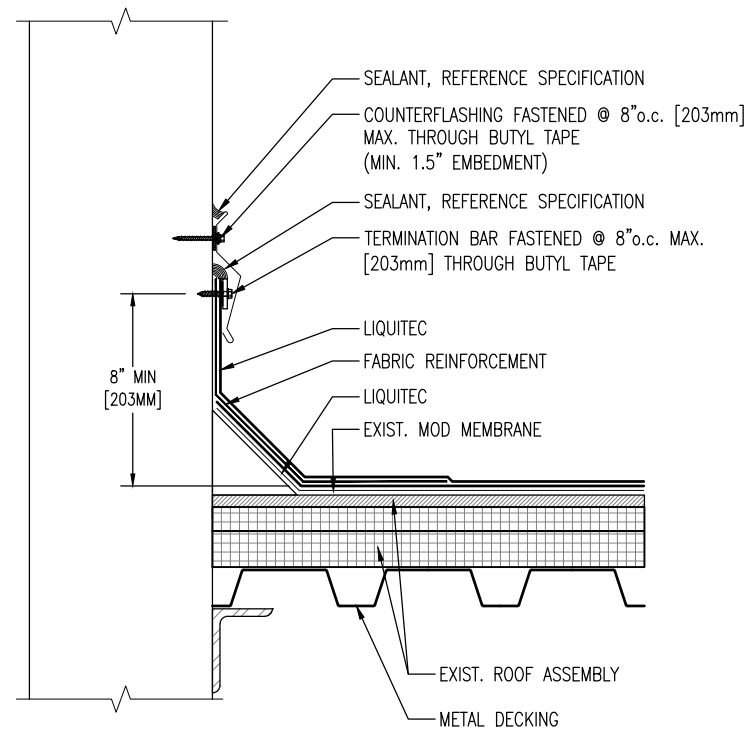
NOTE:
REFER TO LIQUITEC APPLICATION
GUIDES FOR INSTALLATION GUIDELINES.

E
3 **EXHAUST FAN**
SCALE: 1/2" = 1'-0"



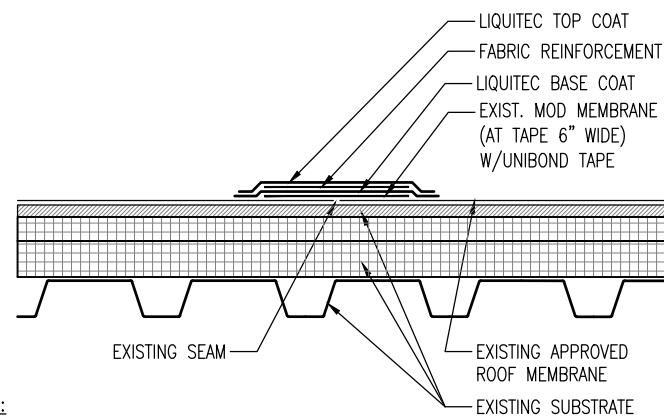
NOTE:
REFER TO LIQUITEC APPLICATION
GUIDES FOR INSTALLATION GUIDELINES.

D
3 **METAL EDGE - DRIP EDGE**
SCALE: 1/2" = 1'-0"



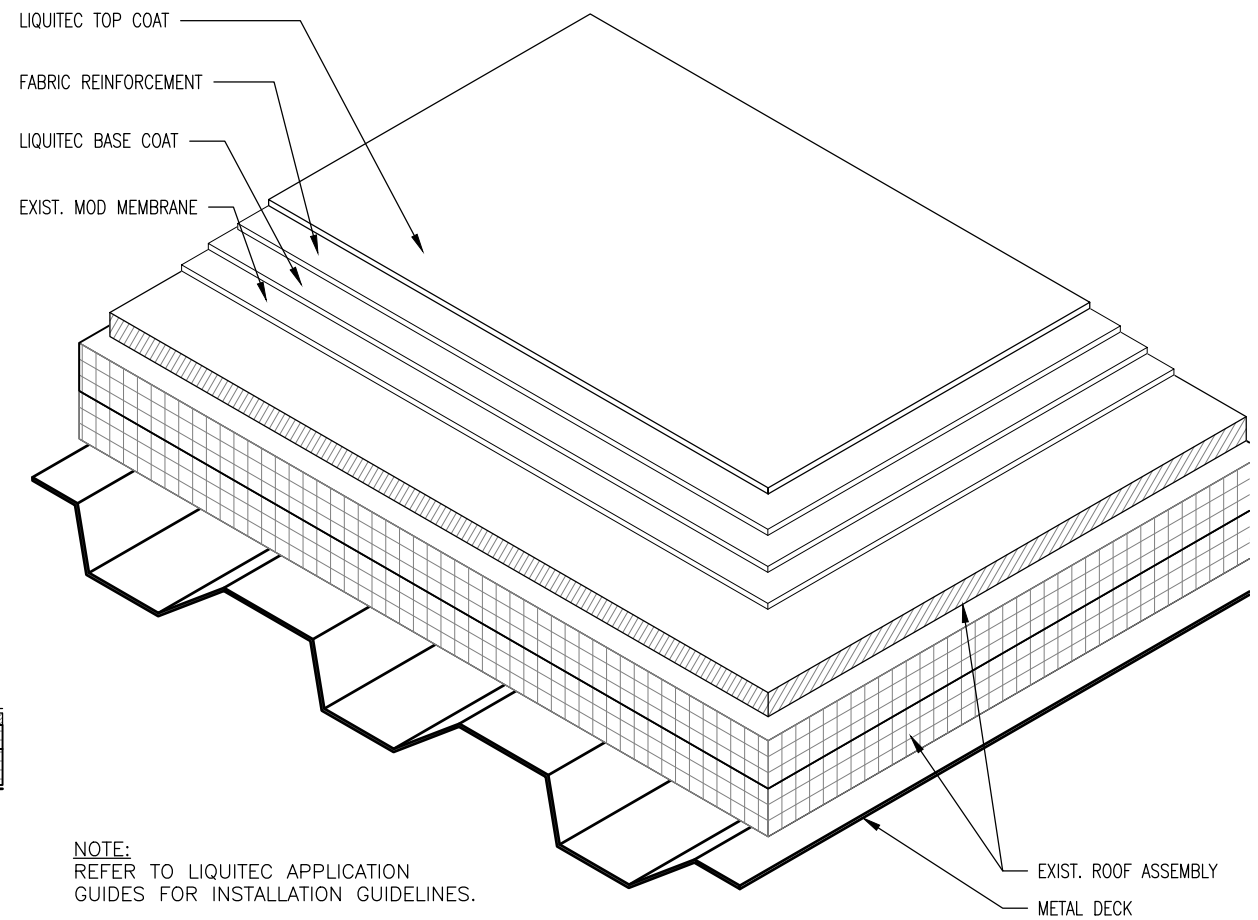
NOTE:
REFER TO LIQUITEC APPLICATION
GUIDES FOR INSTALLATION GUIDELINES.

C
3 **WALL FLASHING -
SURFACE MOUNTED COUNTERFLASHING**
SCALE: 1/2" = 1'-0"



NOTE:
REFER TO LIQUITEC APPLICATION
GUIDES FOR INSTALLATION GUIDELINES.

B
3 **TYPICAL MEMBRANE SEAL DETAIL**
SCALE: 1/2" = 1'-0"



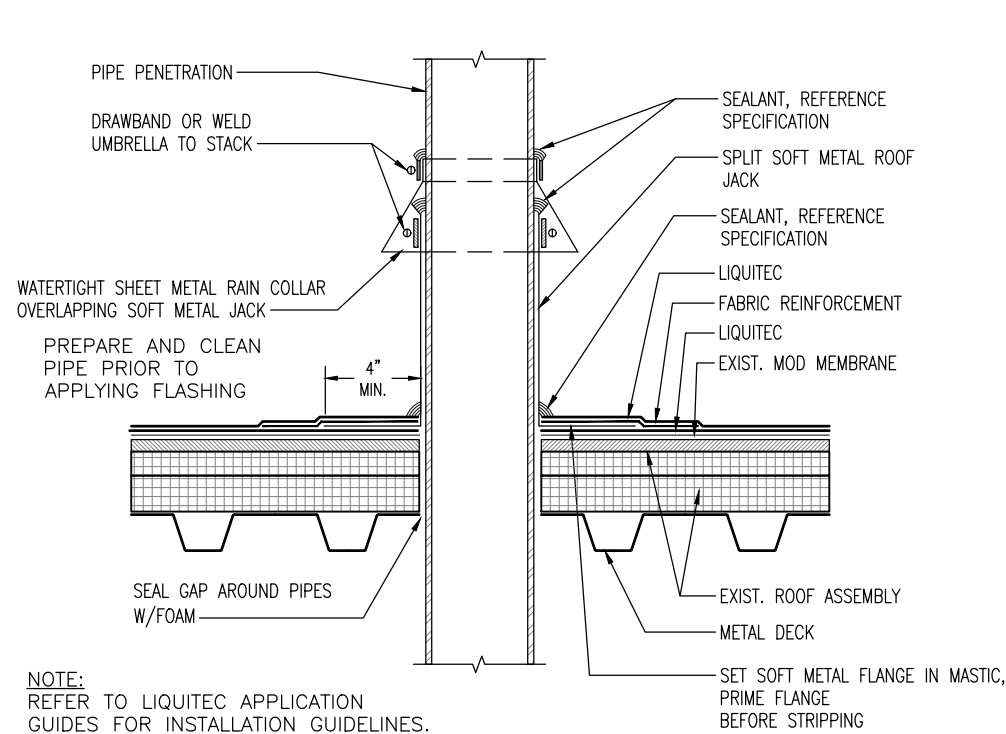
NOTE:
REFER TO LIQUITEC APPLICATION
GUIDES FOR INSTALLATION GUIDELINES.

A
3 **TYPICAL ROOF SYSTEM
SURFACE**
SCALE: 3" = 1'-0"

THE GARLAND COMPANY INC.
3800 EAST 91st STREET - CLEVELAND, OHIO 44105-2197
PHONE (800) 327-9356 / FAX (216) 641-0633

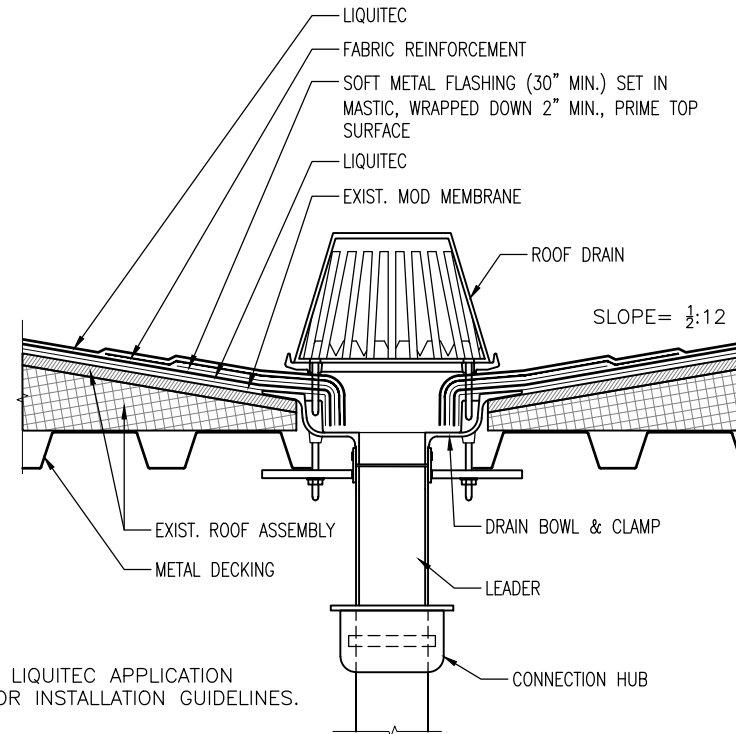


DESOTO JUNIOR HIGH SCHOOL 731 AMETS DRIVE, DE SOTO, MO 63202	ARCHITECT: JEREMY CODART	DWG BY: GCK	CHK BY:
AGENT: JEREMY CODART	JOB NUMBER:	CUSTOMER:	
DATE: 08-17-22	SHEET: 3 OF 7	REVISION:	



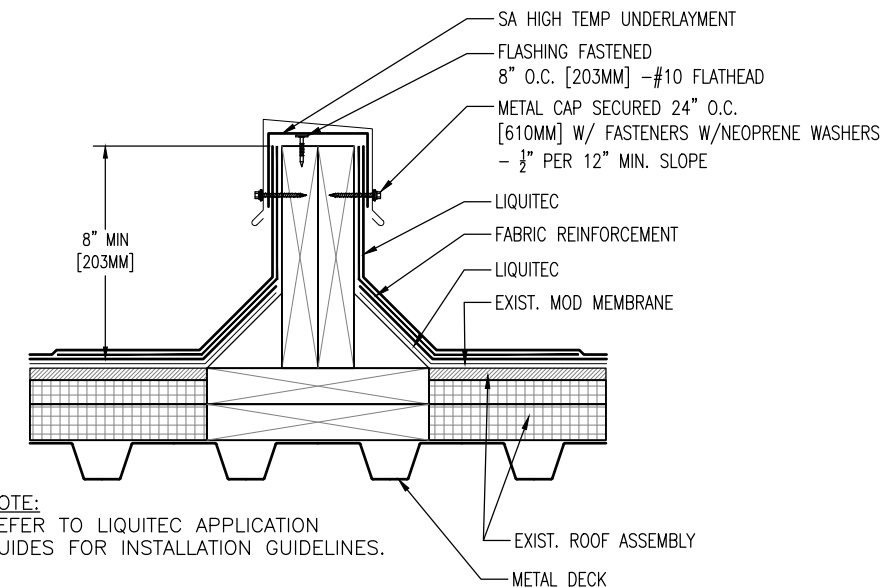
NOTE:
REFER TO LIQUITEC APPLICATION
GUIDES FOR INSTALLATION GUIDELINES.

M PIPE/TUBE PENETRATION - SPLIT JACK w/COLLAR
4 SCALE: 1/2" = 1'-0"



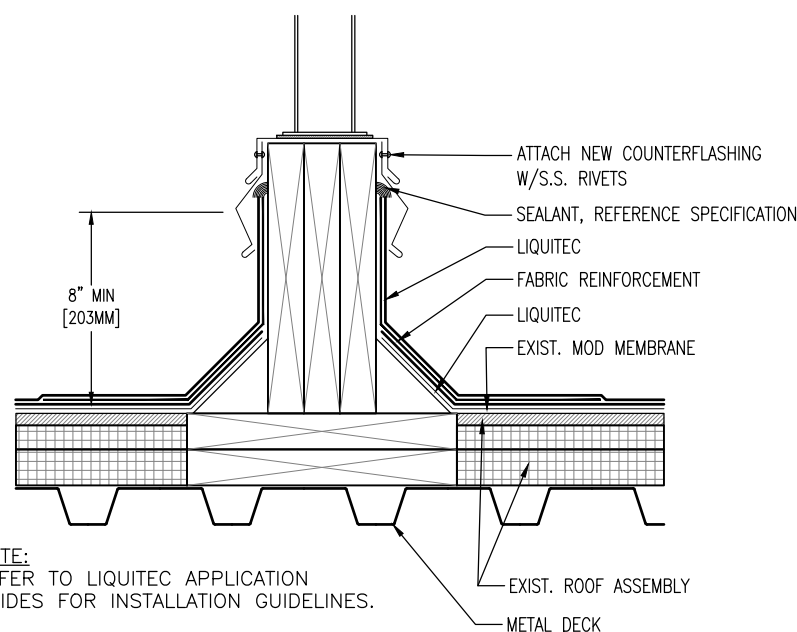
NOTE:
REFER TO LIQUITEC APPLICATION
GUIDES FOR INSTALLATION GUIDELINES.

L ROOF DRAIN
4 SCALE: 1/2" = 1'-0"



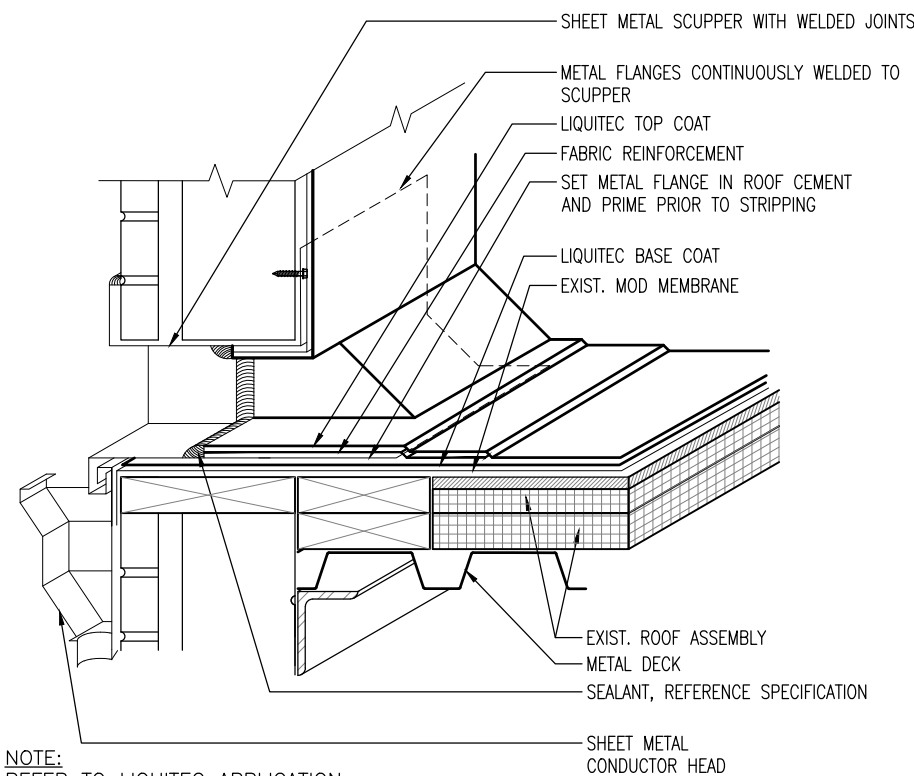
NOTE:
REFER TO LIQUITEC APPLICATION
GUIDES FOR INSTALLATION GUIDELINES.

K AREA DIVIDER
4 SCALE: 1/2" = 1'-0"



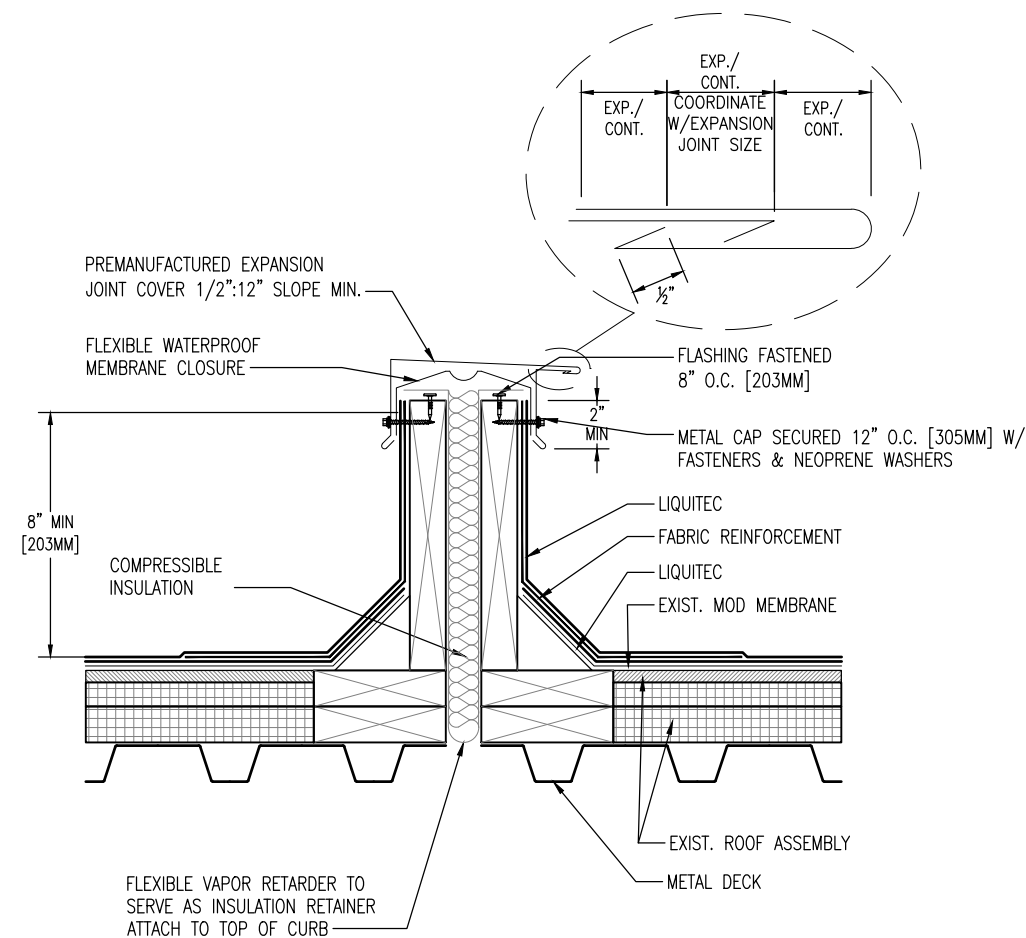
NOTE:
REFER TO LIQUITEC APPLICATION
GUIDES FOR INSTALLATION GUIDELINES.

J EQUIPMENT SUPPORT - EXISTING
4 SCALE: 1/2" = 1'-0"



NOTE:
REFER TO LIQUITEC APPLICATION
GUIDES FOR INSTALLATION GUIDELINES.

H SCUPPER THROUGHWALL
4 SCALE: 1/2" = 1'-0"



NOTE:
REFER TO LIQUITEC APPLICATION
GUIDES FOR INSTALLATION GUIDELINES.

G EXPANSION JOINT
4 SCALE: 1/2" = 1'-0"



DESOTO JUNIOR HIGH SCHOOL
731 AMETS DRIVE, DE SOTO, MO 63202

AGENT: JEREMY CODART
JOB NUMBER:

ARCHITECT: JEREMY CODART
CUSTOMER:

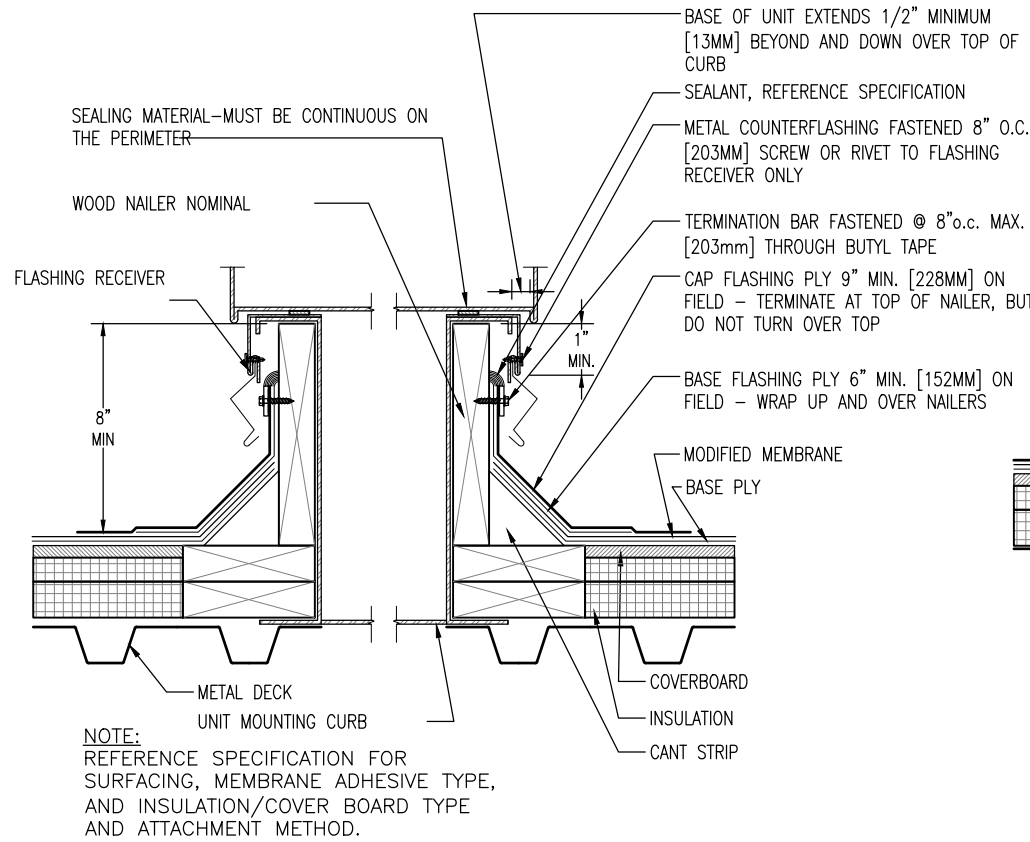
DATE: 08-17-22
SHEET: 4 OF 7

REVISION:

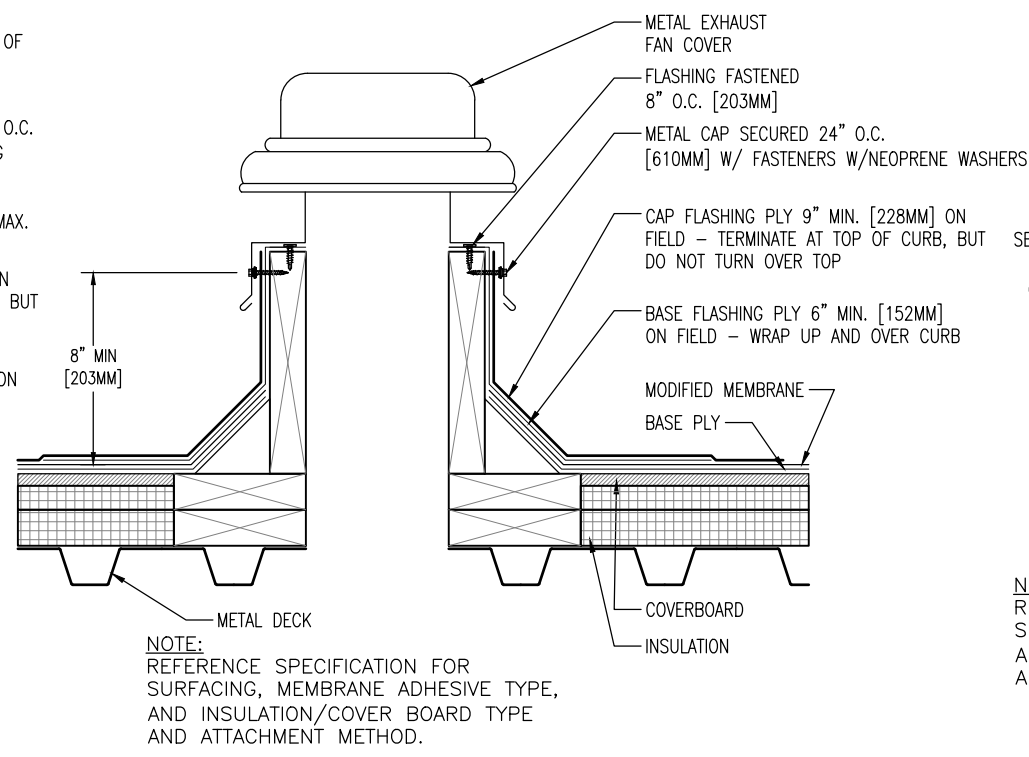
CHK BY: GCK
DWG BY: GCK

PHONE (800) 321-9356 / FAX (216) 641-0633

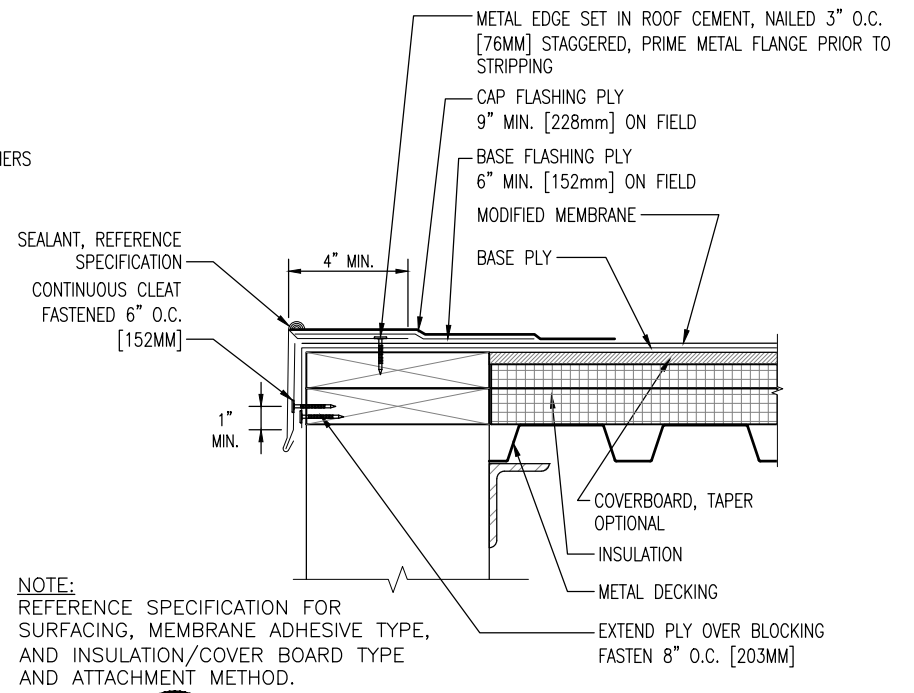
THE GARLAND COMPANY INC.
3800 EAST 91st STREET - CLEVELAND, OHIO 44105-2197



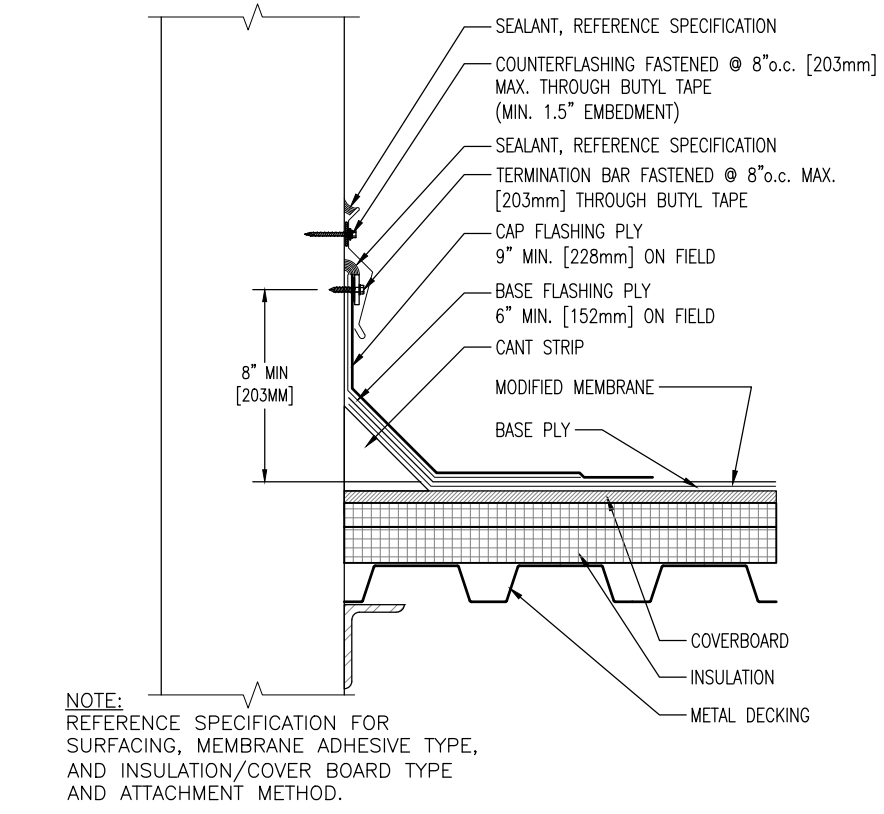
S
5
CURB DETAIL / AIR HANDLING STATION
SCALE: 1/2" = 1'-0"



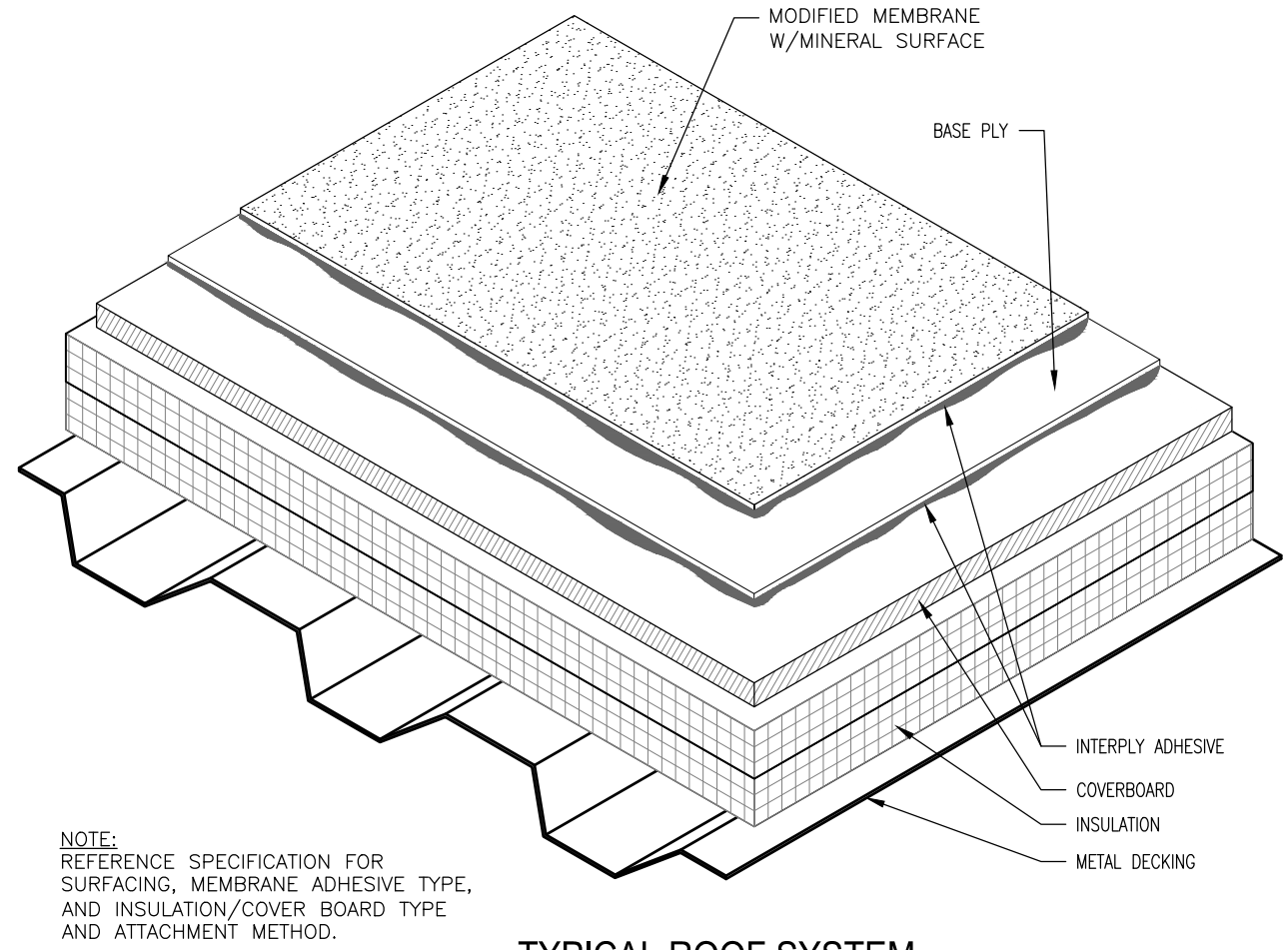
R
5
EXHAUST FAN
SCALE: 1/2" = 1'-0"



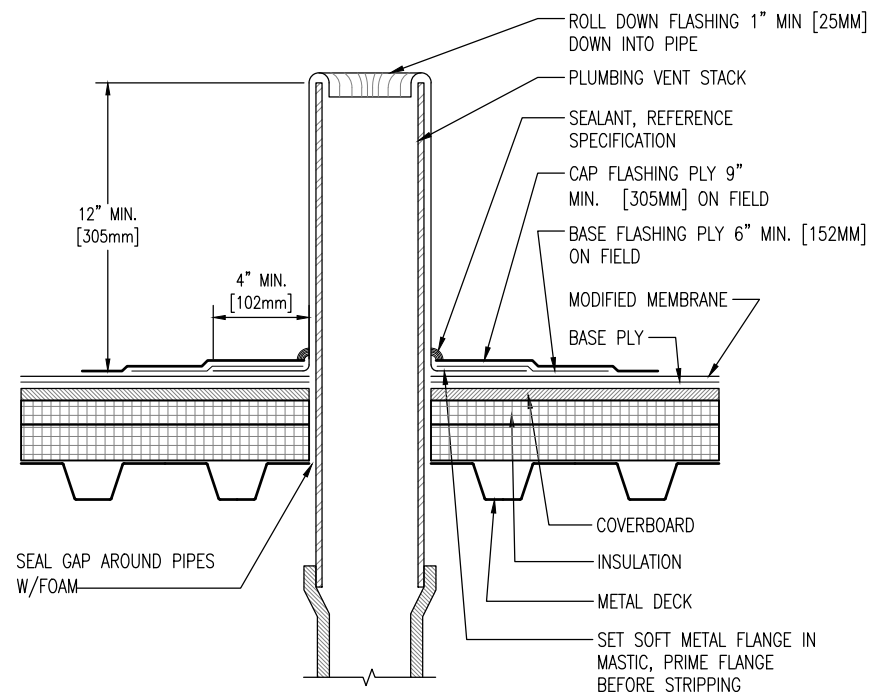
Q
5
METAL EDGE - DRIP EDGE
SCALE: 1/2" = 1'-0"



P
5
WALL FLASHING - SURFACE MOUNTED COUNTERFLASHING
SCALE: 1/2" = 1'-0"

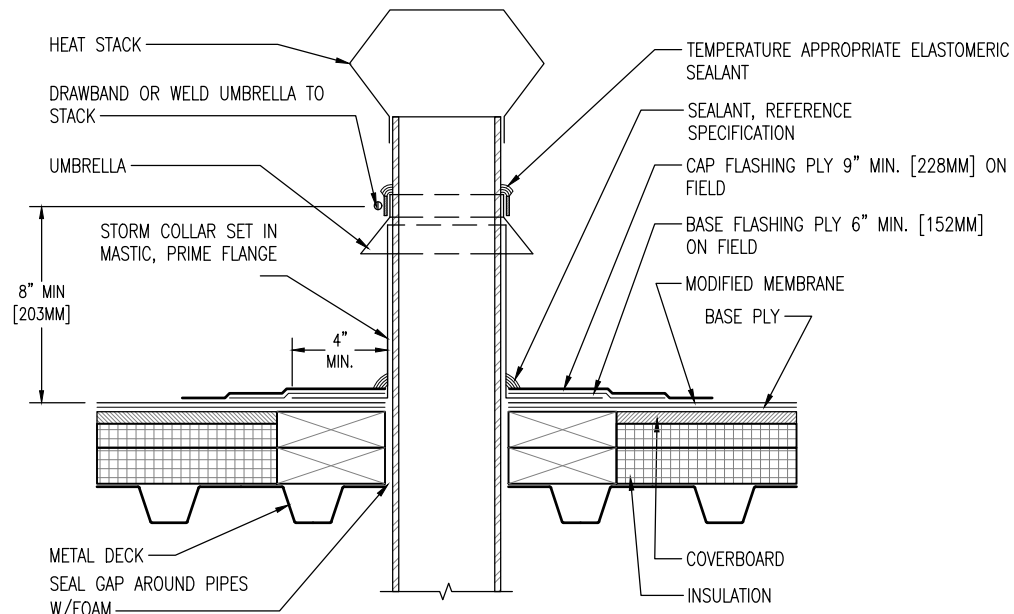


N
5
TYPICAL ROOF SYSTEM MINERAL SURFACE
SCALE: 3" = 1'-0"



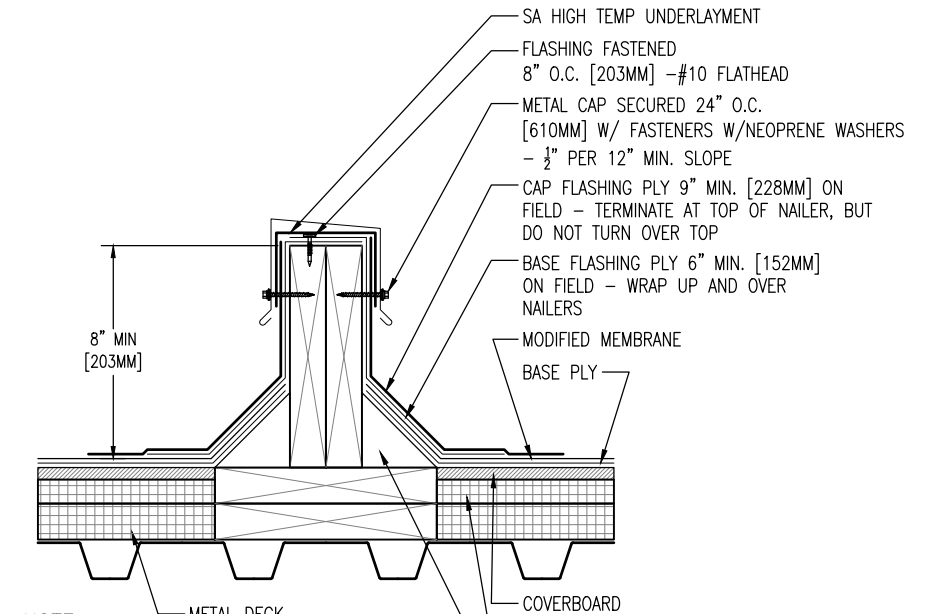
NOTE:
REFERENCE SPECIFICATION FOR SURFACING, MEMBRANE ADHESIVE TYPE, AND INSULATION/COVER BOARD TYPE AND ATTACHMENT METHOD.

Y PLUMBING STACK
6 SCALE: 1/2" = 1'-0"



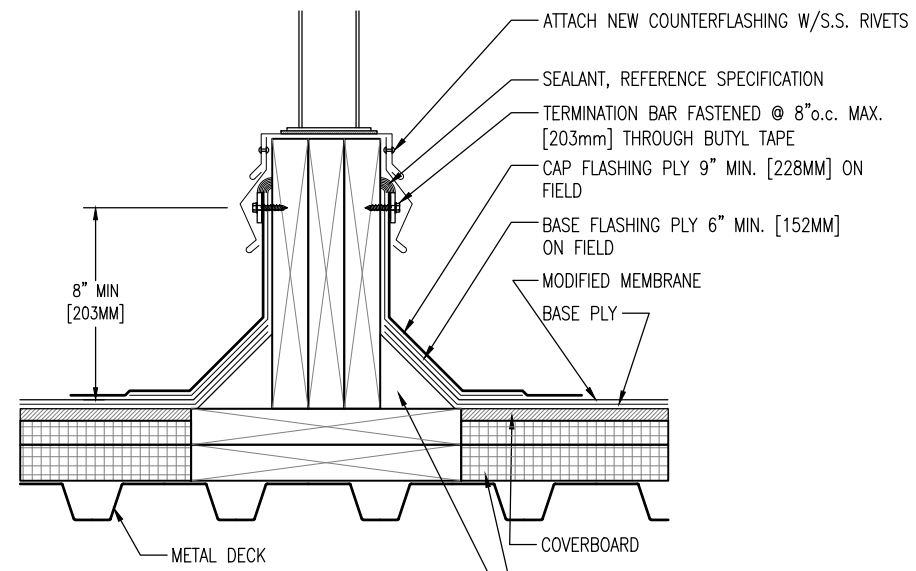
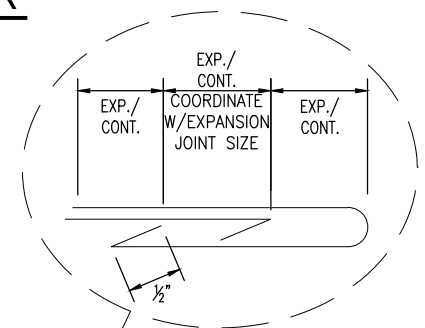
NOTE:
REFERENCE SPECIFICATION FOR SURFACING, MEMBRANE ADHESIVE TYPE, AND INSULATION/COVER BOARD TYPE AND ATTACHMENT METHOD.

X HEAT STACK
6 SCALE: 1/2" = 1'-0"



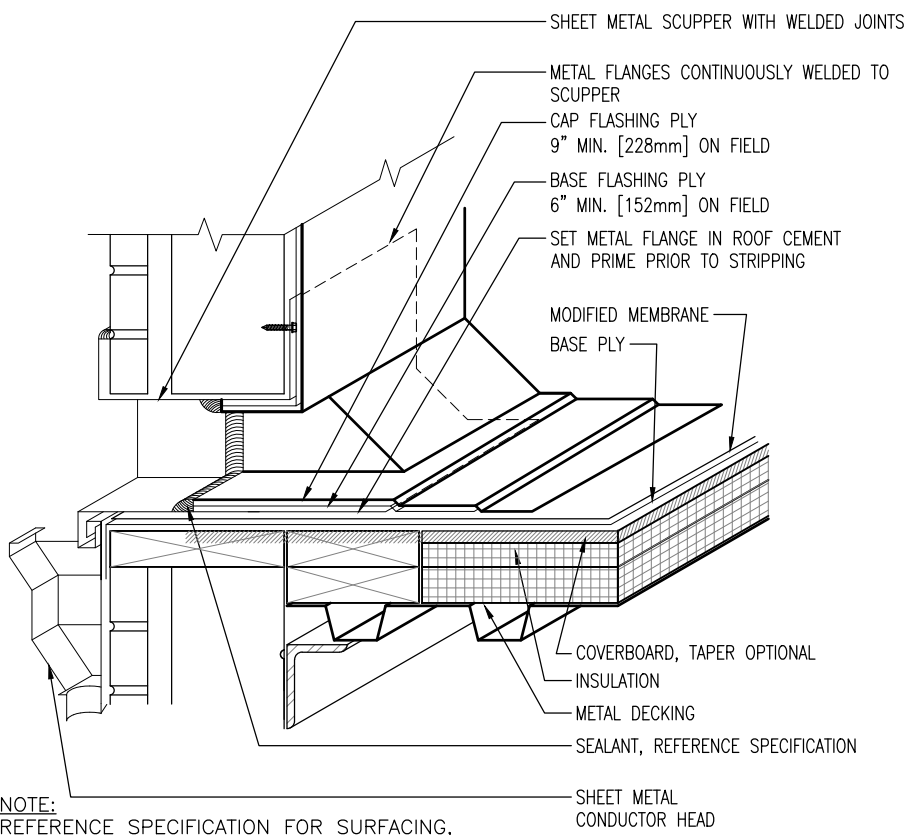
NOTE:
REFERENCE SPECIFICATION FOR SURFACING, MEMBRANE ADHESIVE TYPE, AND INSULATION/COVER BOARD TYPE AND ATTACHMENT METHOD.

W AREA DIVIDER
6 SCALE: 1/2" = 1'-0"



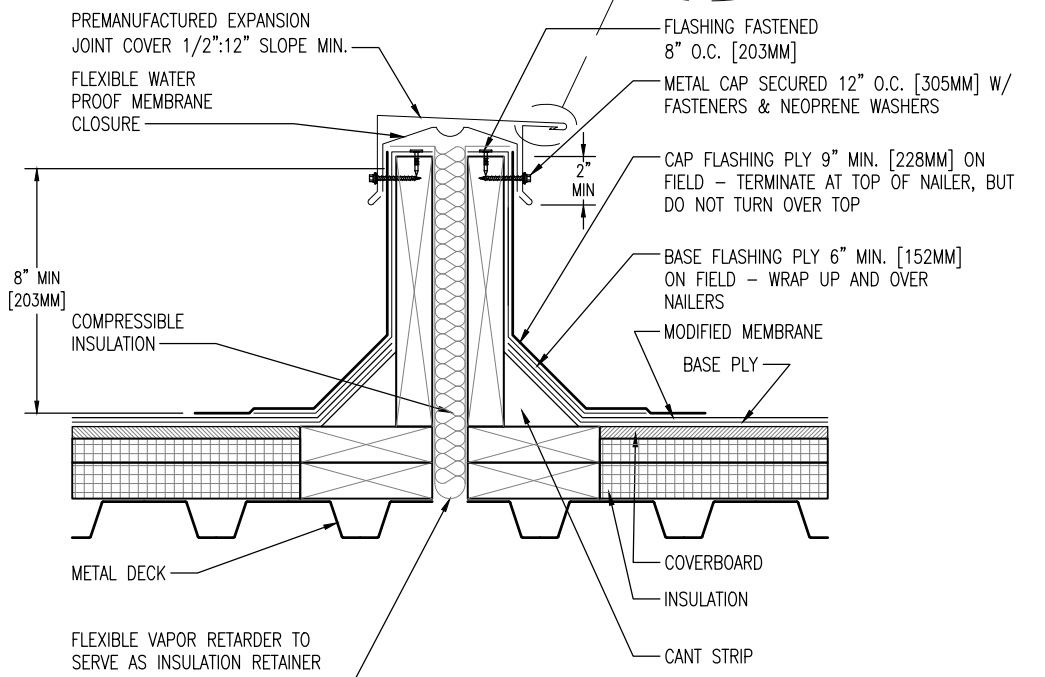
NOTE:
REFERENCE SPECIFICATION FOR SURFACING, MEMBRANE ADHESIVE TYPE, AND INSULATION/COVER BOARD TYPE AND ATTACHMENT METHOD.

V EQUIPMENT SUPPORT - EXISTING
6 SCALE: 1/2" = 1'-0"



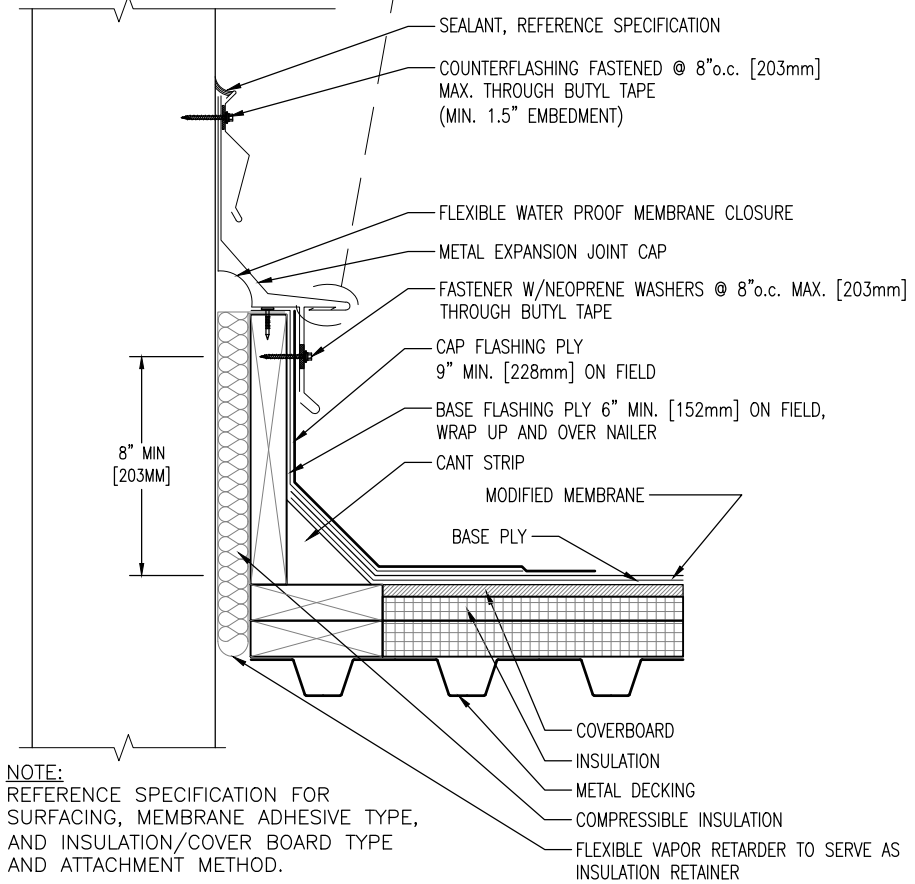
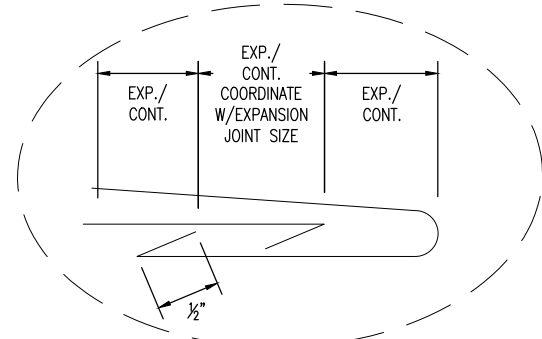
NOTE:
REFERENCE SPECIFICATION FOR SURFACING, MEMBRANE ADHESIVE TYPE, AND INSULATION/COVER BOARD TYPE AND ATTACHMENT METHOD.

U SCUPPER THROUGHWALL
6 SCALE: 1/2" = 1'-0"



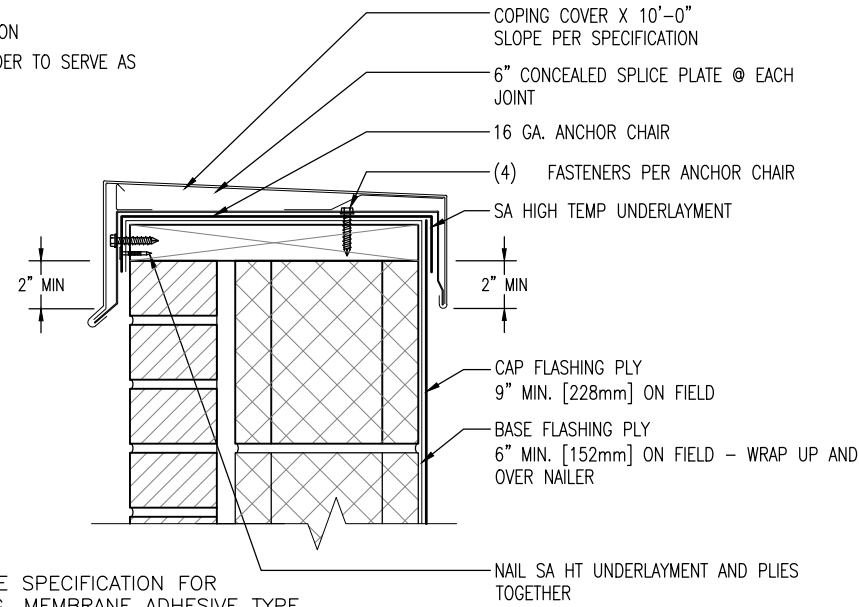
NOTE:
REFERENCE SPECIFICATION FOR SURFACING, MEMBRANE ADHESIVE TYPE, AND INSULATION/COVER BOARD TYPE AND ATTACHMENT METHOD.

T EXPANSION JOINT
6 SCALE: 1/2" = 1'-0"



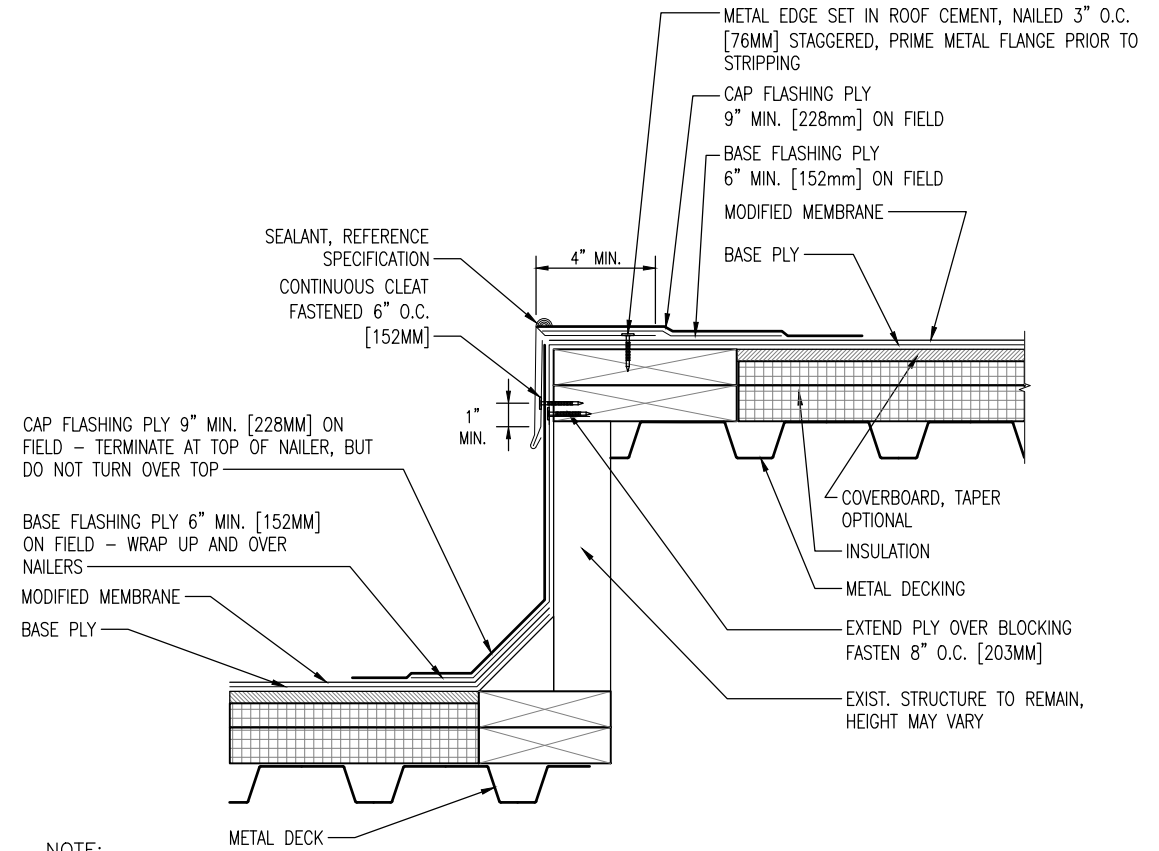
NOTE:
REFERENCE SPECIFICATION FOR
SURFACING, MEMBRANE ADHESIVE TYPE,
AND INSULATION/COVER BOARD TYPE
AND ATTACHMENT METHOD.

CC EXPANSION JOINT AT WALL
7 SCALE: 1/2" = 1'-0"



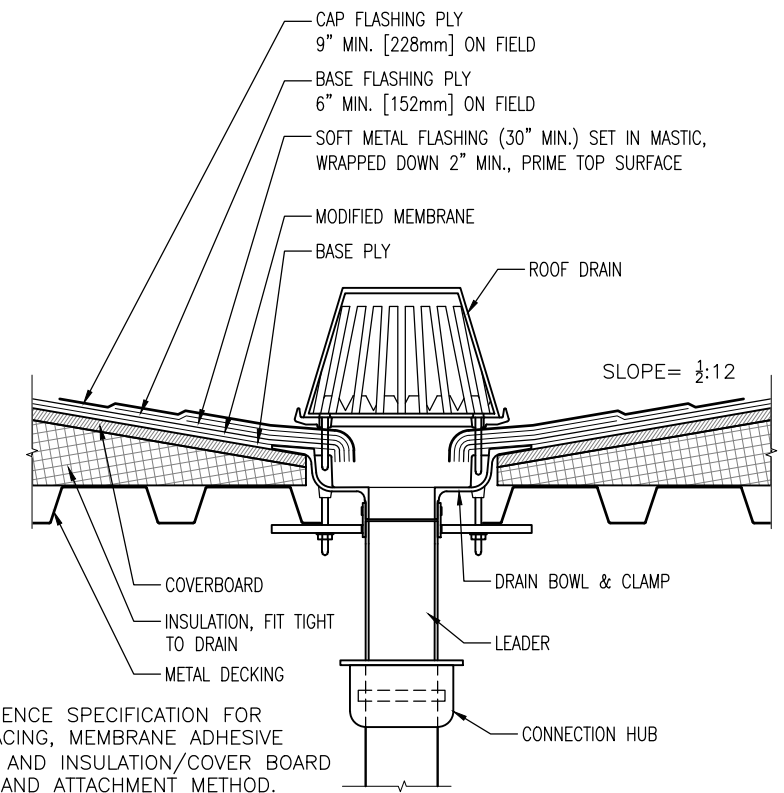
NOTE:
REFERENCE SPECIFICATION FOR
SURFACING, MEMBRANE ADHESIVE TYPE,
AND INSULATION/COVER BOARD TYPE
AND ATTACHMENT METHOD.

AA COPING CAP AT MASONRY WALL
7 SCALE: 1/2" = 1'-0"



NOTE:
REFERENCE SPECIFICATION FOR
SURFACING, MEMBRANE ADHESIVE TYPE,
AND INSULATION/COVER BOARD TYPE
AND ATTACHMENT METHOD.

BB WALL TRANSITION
7 SCALE: 1/2" = 1'-0"



NOTE:
REFERENCE SPECIFICATION FOR
SURFACING, MEMBRANE ADHESIVE
TYPE, AND INSULATION/COVER BOARD
TYPE AND ATTACHMENT METHOD.

Z ROOF DRAIN
7 SCALE: 1/2" = 1'-0"

